



Signal devices with USB interfaces



Many fields of application require operating statuses or faults to be displayed by an optical signal. As a PLC or machine control system is not always available, PCs are frequently used for system control and monitoring. Examples include cash register systems or call centres.

The ideal solution here is to use the terminal element with USB port. This useful terminal is available for signal tower series KombiSIGN 71, 72 and 40. Developed in-house at WERMA, this innovative product allows direct PC actuation for fast and convenient commissioning.



KombiSIGN 71 + 72

Terminal element

Dimensions (Ø x Height) 70 mm x 36 mm

Protection rating IP 65

Fixing Tube mounting

Power supply Via USB (5 V DC)

Voltage 24 V DC

Current carrying cap. Σ I_{max} 90 mA at 24 V

Life duration Up to 50,000 h

Assembly Demo software, driver, handbook and USB connection cable (1.8 m long), System requirements see handbook

Terminal element **640 840 00**

Pre-configured signal tower (green, yellow, red) **649 000 05**



Accessories*



Base with integrated tube Ø 25 mm, plastic

Base for tube, Ø 25 mm, metal

Tube Ø 25 mm, all anodised aluminium, 100, 250, 400, 600, 800, 1000 mm long

KombiSIGN 71 (red, green, yellow, white, blue)

Permanent light element

LED Permanent light element

LED Permanent light element ultrabright

Flashing light element (Xenon)

LED Flashing light element

LED EVS element

LED Blinking light element

LED Rotating light element

LED Permanent light element multicolour

KombiSIGN 72 (red, green, yellow, white, blue)

TwinLIGHT (Permanent/Blinking light)

TwinFLASH (Flash/EVS)

Benefits

- Direct triggering of signal tower elements via USB Interface
- Actuation via DLL (Dynamic Link Library) or VCP (Virtual-COM-Port)
- Simple integration into any customer-specific software
- No additional power supply or hardware necessary
- Up to five signal towers with a maximum of five tiers each can be connected
- They can be directly connected and are ready for immediate use (plug and play)
- Maximum cable length 5 m



ClassicLOOK

DesignLOOK



KombiSIGN 40

	ClassicLOOK	DesignLOOK
Dimensions (Ø x Height)	40 mm x 59 mm	
Protection rating	IP 66/69k	
Fixing	Tube mounting (adapter needed)	
Voltage	5 V DC (USB)	
Current consumption	500 mA	
USB terminal element	631 810 53	631 410 53

Accessories*



Benefits

- Control via USB-Terminal.exe or VCP (Virtual COM Port)
- New demonstration software
- Simple integration into any customer-specific software
- No additional power supply or hardware necessary
- Up to three signal elements can be controlled
- They can be directly connected and are ready for immediate use (plug and play)
- Maximum cable length 3 m

- 2 tone siren
- TwinLIGHT (Permanent/Blinking light), red, green, yellow, white, blue
- Extension tube
- Adapter for tube mounting
- Tube Ø 25 mm, all anodised aluminium, 100, 250, 400 mm long
- Base for tube Ø 25 mm, metal
- Base with integrated tube, Ø 25 mm, 110 mm long, plastic
- USB cable type C to type A 3 m



The LED beacon Multicolour is capable of signalling anywhere where a PC with a USB interface is available, whether in the measuring technology field, in cash register systems, vending machines or in the private or industrial sector.

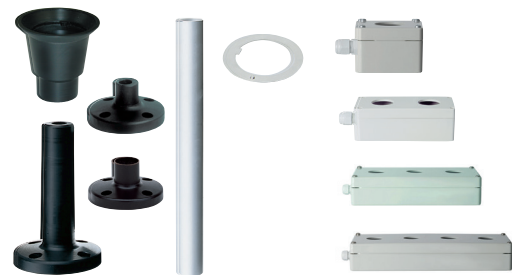
The beacon is simply attached to the USB 2.0 or 1.1 interface of a PC with a Windows or Linux operating system. Following the installation of the driver the beacon can be simply controlled as a serial interface.



LED Beacon Multicolour (PG29)

Dimensions (Ø x Height)	75 mm x 66 mm (Protrusion from panel))
Fixing	Installation mounting for Ø 37 mm, Base and Wall mounting (accessories)
Protection rating	IP 65
Power supply	Via USB
Colour options	More than 200,000 colours (RGB LED)
Voltage	5 V (USB-Connection)
Current consumption	≤ 500 mA
Life duration	Up to 50,000 h
Assembly	Demo software, driver, handbook and USB connection cable included (1.8 m long), System requirements see handbook
Order no.	816 480 53

Accessories*



- Tube adaptor
- Base with integrated tube, Ø 25 mm, 110 mm long, plastic
- Base for tube mounting
- Base for base mounting
- Tube Ø 25 mm, all anodised aluminium, 100, 250, 400 mm long
- Anti-twist device
- Surface housing IP65 for 1, 2, 3 or 4 Installation Beacons

Benefits

- Direct triggering of LED beacon via USB Interface
- Actuation via DLL (Dynamic Link Library) or VCP (Virtual-COM-Port)
- Simple integration into any customer-specific software
- No additional power supply or hardware necessary
- They can be directly connected and are ready for immediate use (plug and play)
- Maximum cable length 5m
- A wide range of colours and light effects can be quickly and simply programmed by the customer and altered at any time.

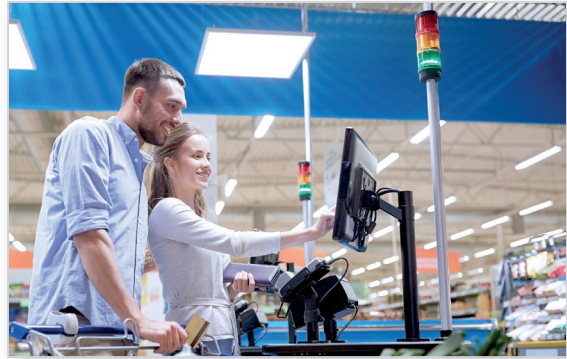
You can find further accessories online at www.werma.com or in our catalogue.

*Order no. can be found at www.werma.com or in the catalogue.

Typical applications



Signal Tower in call centres



Automated check-out systems



Printer in the office or the manufacturing department



LED Beacon in call centres



Public access systems



Inspection stations in the manufacturing department

WERMA Signaltechnik GmbH + Co. KG

Dürbheimer Str. 15
D-78604 Rietheim-Weilheim
Phone + 49 74 24 95 57- 0 | Fax + 49 74 24 95 57- 44
www.werma.com | info@werma.com

WERMA Signaltechnik

Niederlassung Neuhausen am Rhf.
Rheingoldstrasse 50
8212 Neuhausen am Rheinfeld
Switzerland
Phone + 41 52 674 00 60 | Fax + 41 52 674 00 66
www.werma.com | info@werma.ch

WERMA Italia S.r.l.

Via dell'Artigianato 42
29122 Piacenza
Italy
Phone +39 05 23 04 45 44
www.werma.com | info@werma.it

WERMA SARL

56, Rue Colière
69780 Mions
France
Phone + 33 4 72 22 37 37
www.werma.com | info@werma.fr

WERMA BENELUX

Poortakkerstraat 41C
9051 Sint-Denijs-Westrem
Belgium
Phone + 32 9 220 31 11
www.werma.com | info@wermabenelux.com

WERMA (UK) Ltd.

11 Regent Park
37 Booth Drive
Park Farm Industrial Estate
Wellingborough NN8 6GR
Great Britain
Phone + 44 15 36 48 69 30 | Fax + 44 15 36 51 48 10
www.werma.com | uksales@werma.co.uk

WERMA USA Inc.

1266 Oakbrook Drive, Suite A
Norcross, GA 30093 USA
Phone +1 (470) 361-0600
www.werma.com | us-info@werma.com

WERMA (Shanghai) Co., Ltd.

Building 8, No. 85, Mingnan Road, Songjiang, Shanghai, P. R. C
201613
Phone +86 (0) 21 /5774-0022 | Fax +86 (0) 21 /5774-6601
www.werma.com.cn | info@werma.com.cn